

Taidnapam Park

In the lap of luxury...

RV owners love Taidnapam Park because they have easy access to all of the things that make camping fun: a natural setting, campfires, a lake, and, of course, some of the comforts of home. Taidnapam Park offers 139 individual sites with electric and water hookups, and 96 of those have sewer hookups as well.

...or closer to nature

Consider roughing it and pitching your tent at one of Taidnapam Park's walk-in sites. Those who go natural can choose from 24 sites. Keep in mind that other campers and their equipment may be nearby.

Take ten for the team

The 22 sites in the main group camp at Taidnapam Park allow you to express your more social side. You must reserve at least 10 sites in the group camp area. All of the sites have water and electric hookups, and 18 also have sewer hookups. The group camp has a kitchen shelter, horseshoe pits, a volleyball area and a restroom with showers.

Any unreserved spots in the main group camp will be available to other campers. If you'd like a larger area for your group, you must reserve and pay for the additional sites.

For a rustic group camping experience, reserve Taidnapam Park's primitive group camp. You'll find space for 12 tents, picnic tables, a group fire ring and a nearby restroom with showers. You must reserve all 12 sites if you want to camp in the primitive group camp area.

All in a day's play

Taidnapam Park's day-use area offers no shortage of activities for those who want to just play for the day. Pack a lunch and park yourself at a picnic table, then poke around at the playground. Or plant yourself at a picnic site that includes a table and grill. Aquatic adventurers can safely swim in a small swimming area (lake level permitting), then rinse off at the outside or inside showers. Contact the park for current swimming area conditions.

Cross that bridge when you come to it

If you love to fish, you'll fall for Taidnapam Park's fishing bridge, hook, line and sinker. The bridge doesn't just look cool, it gives everyone the opportunity to drop a line and wait for a bite. The bridge is pedestrian- and wheelchair-accessible. And there's a good chance the big one won't get away. Riffe Lake is known for its excellent fishing.

Something's fishy around here

If you're an avid angler, you'll enjoy dropping a line in Riffe Lake. It is loaded with cutthroat, rainbow and brown trout, as well as coho salmon, steelhead and bass.

Unearthing history

More than 4,600 years ago, Native Americans inhabited the spot now called Taidnapam Park. An interpretive exhibit near the park entrance will teach you about these early campers. Please respect the history and culture of the Cowlitz Indians and Yakama Nation by never disturbing or removing artifacts.

ADA accessibility

We want everyone to enjoy our parks, so we continue to improve access for the mobility impaired. You'll find ADA-accessible campsites and wheelchair-accessible restrooms at Taidnapam Park. The park also features an ADA-accessible fishing bridge. If you have other special needs, please contact the park in advance of your arrival to find out if we can accommodate your request.

Need this brochure in another format?
Call (253) 502-8759.

Visit all of Tacoma Power's parks



Taidnapam Park

P.O. Box 277 • Glenoma, WA 98336

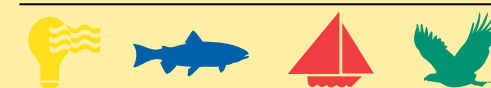
Directions

From Tacoma, take I-5 south to Highway 12 East (Exit 68). Drive approximately 37 miles (5 miles past Morton) and turn right on Kosmos Road, then left onto Champion Haul Road. Drive approximately 4 miles to the park entrance. Latitude: N 46 28 06.2 • Longitude: W 122 09 51.2

Reservations: 1-888-CAMPOUT (226-7688)
tacomapower.com/parks

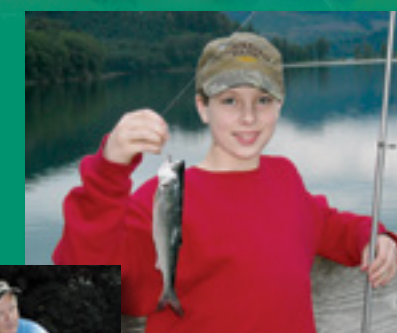
Fishing and recreation line: 1-888-502-8690
Park office: (360) 497-7707

Assistance for the hearing impaired
Washington Relay Service – 711 or 1-800-833-6388



Cowlitz River Project
TACOMA POWER

Play all day
Stay all night



TACOMA POWER
TACOMA PUBLIC UTILITIES

PARKS

About... Taidnapam Park

- Year-round camping and day-use area (Park is closed December 20 through January 1)
- 163 individual campsites
 - 96 with water, electric and sewer hookups
 - 43 with water and electric hookups
 - 24 walk-in tent sites
- 22-site group camp with hookups
- 12-site primitive group camp without hookups
- Boat launch open mid-May through mid-September, lake level permitting
- Fire rings and picnic tables in all campsites
- Coin-operated showers
- Wheelchair-accessible sites and restrooms

Camping fees

- \$33 Water/electric and sewer hookups
- \$31 Water/electric hookups
- \$18 Walk-in tent sites
- \$10 Extra vehicle, if space allows (No charge for towed vehicles)
- \$75 Extra vehicle season pass
- \$185 Primitive group camp (You must reserve all 12 sites)

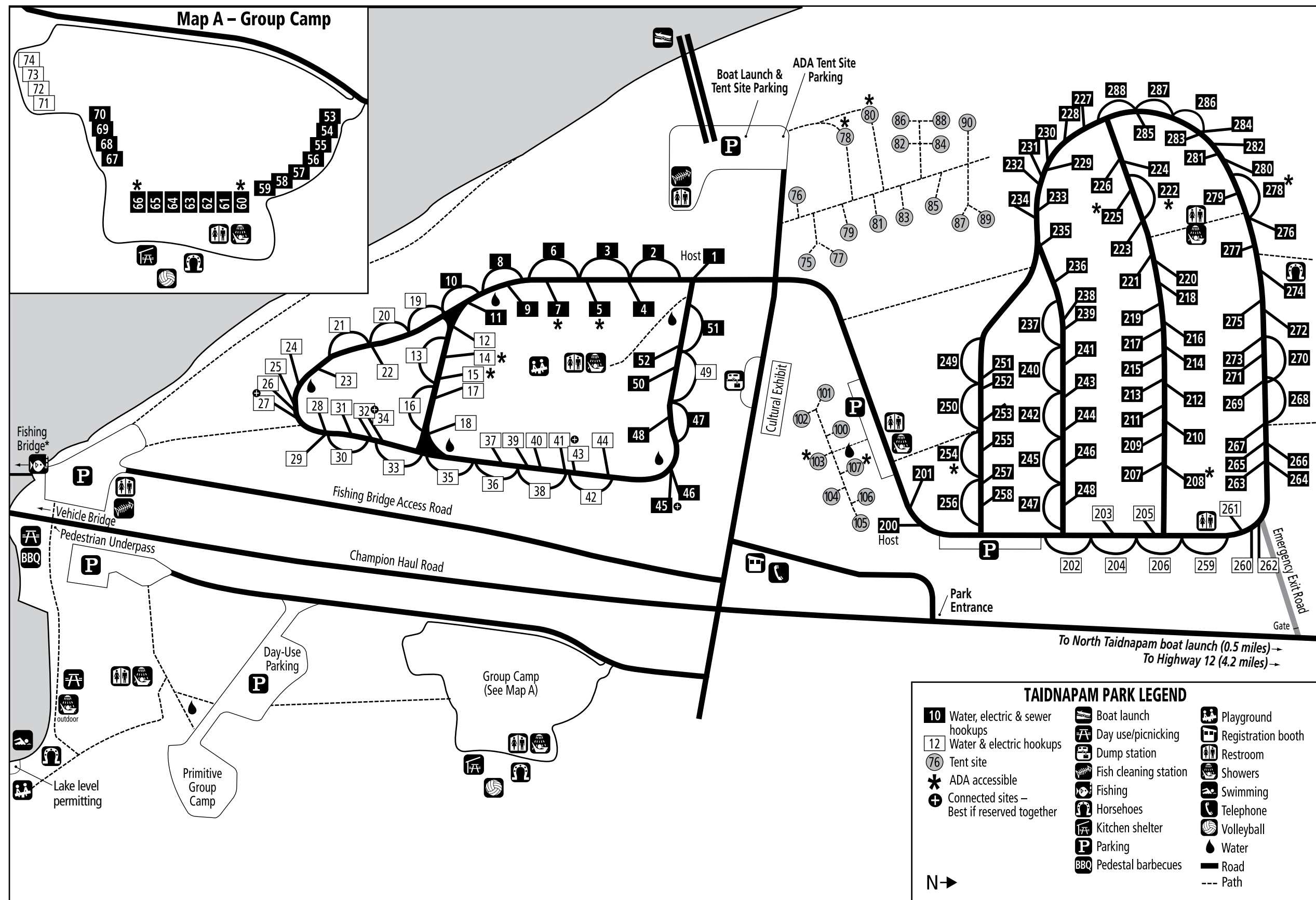
The main group camp area has a 10-site reservation minimum.

Other fees

- Individual campsite reservation fee
 - \$6.50 Online
 - \$8.50 Phone 1-888-CAMPOUT
- \$15 Group camp reservation fee
- \$5 Day-use parking (Weekends and holidays between Memorial Day and Labor Day weekends)
- \$35 Season day-use parking pass

Discounts

- \$5 Senior or disabled discount for camping



These maps depict developed park areas and facilities. Surrounding undeveloped park areas could contain unidentified hazards. Recreate in undeveloped areas at your own risk.